

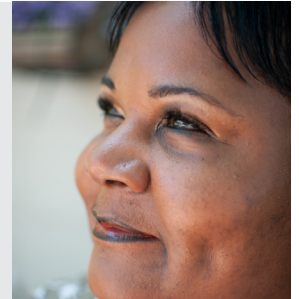
**SOAR Works!** Around the country, SOAR projects produce positive outcomes by linking people experiencing homelessness to disability benefits.

1

## SOAR Ends Homelessness and Supports Recovery

### Access to benefits and housing promotes recovery

SOAR is a national program designed to increase access to the disability income benefit programs administered by the Social Security Administration (SSA) for eligible adults who are experiencing or at risk of homelessness and have a mental illness, medical impairment, and/or a co-occurring substance use disorder. SOAR seeks to end homelessness through increased access to SSI/SSDI income supports.



2

## SOAR Benefits Staff

### SOAR-assisted approval rate on SSI/SSDI applications in Kansas: 81% vs. 10-30% for non-SOAR applications

SOAR-trained staff prepare comprehensive quality SSI/SSDI applications that are more likely to be approved, and approved quickly. SOAR reduces frustration and time navigating the process, providing time for staff to focus on enhanced services.



3

## SOAR Benefits Clients

### 84% of SOAR clients stated receiving benefits helped them access treatment and support

Receipt of SSI/SSDI, along with Medicaid/Medicare benefits, provides access to needed treatment, services, and housing; and supports for employment goals. A recent study found that after receiving SSI/SSDI benefits through SOAR, 72% of formerly homeless individuals were living in their own housing.\*

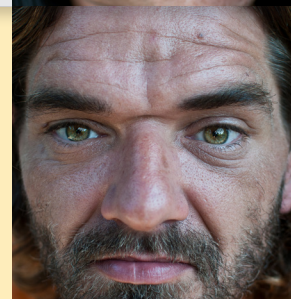


4

## SOAR is Cost-Effective

### SOAR reduces uncompensated care and increases public reimbursements

States can recover funds for people who are eligible for SSI/SSDI. Once someone is approved for SSI and Medicaid, providers can bill Medicaid for services provided up to 90 days prior to the SSI protective filing date. Ten states reported an average of \$10,465 per person in Medicaid reimbursement as a result of SOAR.\*\*

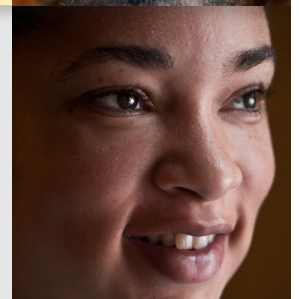


5

## SOAR Reduces Institutionalization

### SOAR facilitates re-entry efforts through access to housing and healthcare

Access to SSI/SSDI diminishes the possibility of a return to institutional life among persons who are transitioning from prison or jail or who are being discharged from state psychiatric hospitals.



\*Health Care for the Homeless, Baltimore in Maryland

\*\*2014 SOAR Outcomes Summary. <http://soarworks.prainc.com/files/SOAR2014Outcomes508.pdf>

## Success Stories

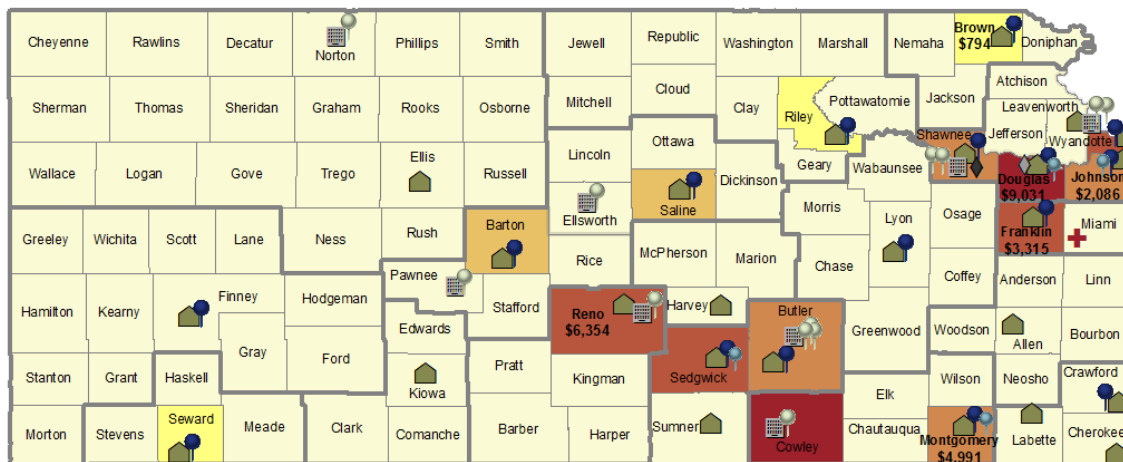


**Susan** was chronically homeless since the 1990s. She was frequently hospitalized for suicidal ideation and attempts. She dresses meticulously and often mentions her successful career. During the **SOAR** process, she discussed in-depth the reasons she presents in such a manner, and challenges that she had never discussed with treatment providers in the past. A review of her earnings record revealed her work history was not as strong as she had reported to others. **Her SOAR application was approved 92 days after her initial application.** She is now stably housed and receiving regular treatment, covered by Medicaid. She is now working on her recovery goals for employment and community connections.

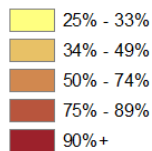
**Joe** entered the penal system as a teenager, and spent much of his life incarcerated, hospitalized, or homeless. Due to the severity of his symptoms, he was unable to maintain self-care or care for his children. He had been denied disability multiples times before he was referred to work with a SOAR trained case manager. **By gathering a lifetime worth of treatment records, incarceration records and other evidence, a comprehensive Medical Summary Report was created by SOAR, clearly documenting his disability.** Benefits were approved and he obtained housing, an income and is now working with his treatment team, coordinating ongoing mental health care, breaking the cycle of incarceration and homelessness.



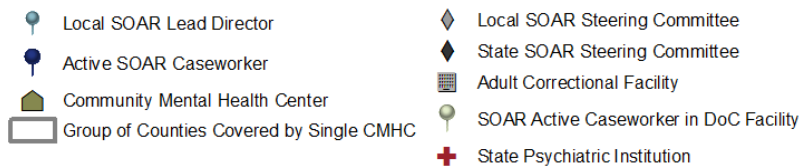
## SOAR in Kansas



### Approval Rate of SOAR Cases



### SOAR Services and Support



\$\$\$# Average Medicaid Reimbursement per Applicant

## Expand SOAR Success in Kansas

CMHCS are able to retroactively bill Medicaid for services provided up to 90 days prior to the SSI protective filing date. In Kansas, one CMHC reported retroactively billing Medicaid an average of \$9,031 per applicant assisted with SOAR.

- Community Mental Health Centers employ full time dedicated SOAR Case workers
- Expand SOAR training to community based organizations
- Expand SOAR to other priority populations such as veterans
- Develop SOAR certification process